

Description

This is low cost TFT module which accept composite video signal and display image on the TFT panel.

Features

- ü Operation voltage 4.5-6V
- ü Auto switch PAL/NTSC
- ü Composite video input
- ü Brightness, contrast, color adjustable by external keyboard



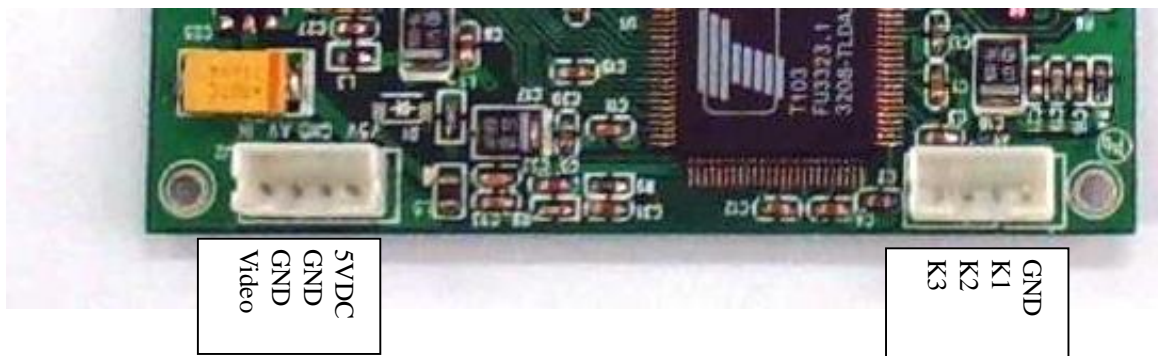
Specification of Driver module

Parameter	Spec
TV system	PAL / NTSC
Video Signal	Composite, 1V p-p, 75Ohm
Operation Voltage	4.5 ~ 6DC
Operation current	265mA @5V
Power connector	4pin: DC/GND, Video/GND
Control interface	4pins: GND, K1, K2, K3
Board Size	70 x 60 x 7.00 mm

Specification of TFT Panel

Parameter	Specification	Unit
Screen Size	3.5 (diagonal)	inch
Surface Treatment	Anti-Glare 25%	
Display Format	320(RGB)x240	dots
Active Area	70.08 (W) x 52.56 (H)	mm
Dot Pitch	0.073(W) x 0.219 (H)	mm
Outline Dimension	76.9 (W) x 63.9 (H) x 2.92(T)	mm
View Angle	direction 6 o'clock	
Temperature Range: Operation	-20~60	C
Storage	-30~80	C

Connectors and pinouts

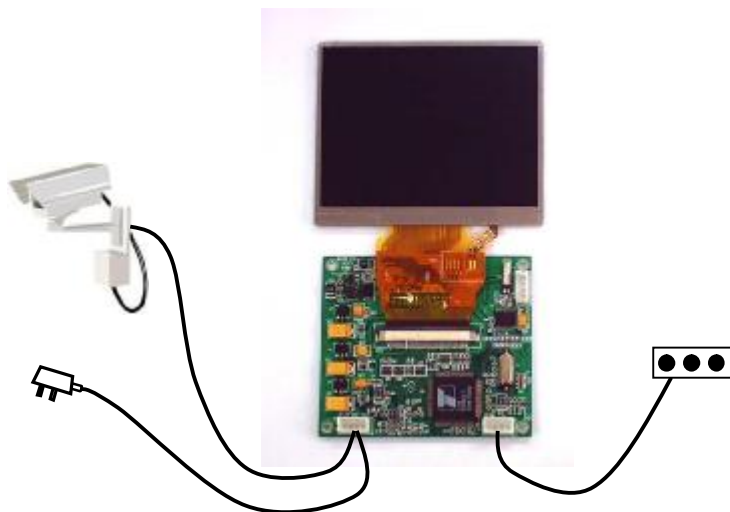


Operation

User needs to build his own keyboard before doing control function. Without this keyboard, the module is still functioned well, all the image setting will be optimized by factory default value.

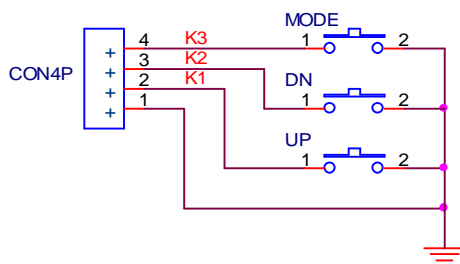
1. Power and video connection

A power, 5V DC, should be connected to the module, together with a video input and a keyboard. If video input is not connected, there will appear blue screen when power up.




2. Schematics for the keyboard

There are three keys needed on the keyboard, namely MODE, DOWN and UP.




3. Contrast Control

1. Press MODE key once and a symbol  and a level bar will appear.
2. The current contrast level is indicated by the red bar.
3. Press UP to increase the contrast.
4. Press DN to decrease the contrast.
5. The setting will save and exit automatically after about 4 seconds of no action.




4. Brightness Control

1. Press MODE key twice and a symbol  and a level bar will appear.
2. The current brightness level is indicated by the red bar.
3. Press UP to increase the brightness.
4. Press DN to decrease the brightness.
5. The setting will save and exit automatically after about 4 seconds of no action.

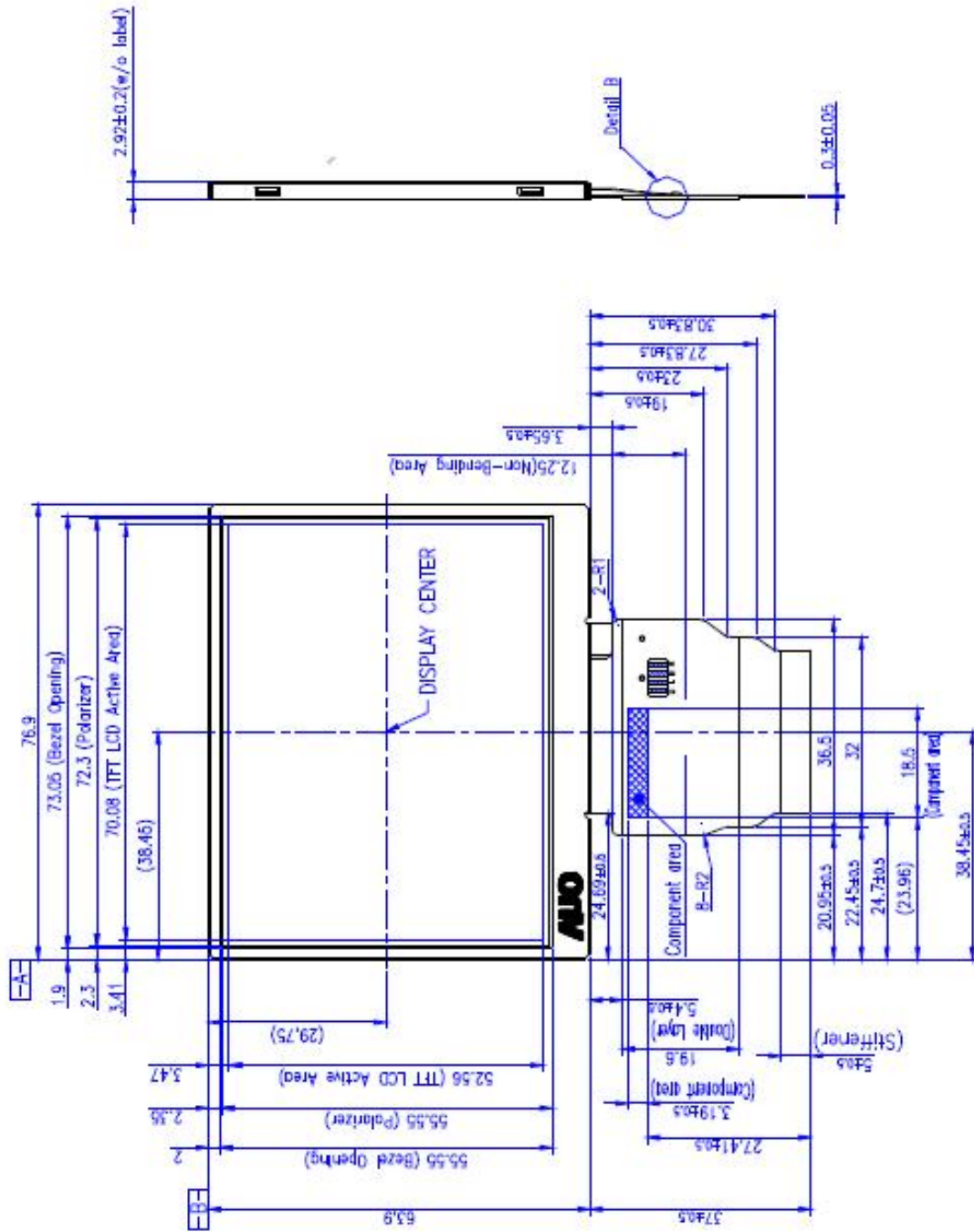


5. Color Control

1. Press MODE key three times and a symbol  and a level bar will appear.
2. The current level is indicated by the red bar.
3. Press UP to increase the saturation.
4. Press DN to decrease the saturation.
5. The setting will save and exit automatically after about 4 seconds of no action.



TFT Panel dimension



Driver Board Dimension

