



This is a family of products based on the most advance CMOS mixed signal technology. It integrates image array, signal processing, timing and control circuitry, all on a single chip, enabling all aspects of B/W video camera application. It is ideal for applications requiring a small footprint, low power and low cost.

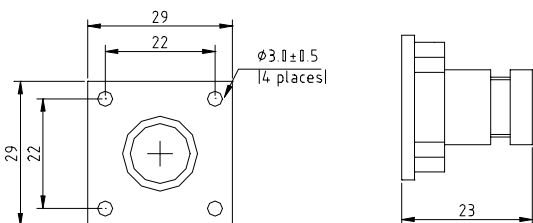
Features:

- Small size : 29 x 29 mm
- Full resolution : 365K pixels
- Wide operation voltage (8 - 15V)
- Lens: f3.7mm F2.0
- Low power consumption (<200mW)
- Direct connect to standard video monitor
- On-chip auto exposure control
- Gamma correction - 0.45/1.0
- Auto gain control - 18dB
- Automatic black level calibration



Application Example

- Video conferencing
- Video Phone
- PC multimedia
- Security and Surveillance System
- Toys



Specification

	M3185A(CCIR)	M3186A (EIA)
Imager	CMOS imager sensor OV7410	
Scanning	2:1 Interlace	
Shutter	1/60 to 1/15,000 sec	
Video Output	Composite video (75Ω)	
Picture Element	628 x 582 pixel	510 x 492 pixel
Effective image area	5.78 x 4.19mm	4.69x 3.54mm
S/N Ratio	>48dB (AGC on)	
Resolution	400TV line	
Fixed pattern noise	<0.03% Vp-p	
Dark Current	<0.2nA/cm ²	
Dynamic range	>72dB	
Min Illumination	0.5 Lux at f1.2	
Operation Voltage	8 - 15 VDC	
Connectors	PWR, Video, GND	
Lens	F3.7mm F2.0, FOV 70° x 63°	

Pin Description

1. CVO Composite Video Output
Direct connect to TV/Monitor
2. GND Common Ground for power and video
3. PWR Power Supply 8-15V DC

