



This is a family of products based on the most advance CMOS mixed signal technology. It integrates image array, signal processing, timing and control circuitry, all on a single chip. It is ideal for applications requiring a small footprint, low power and low cost.

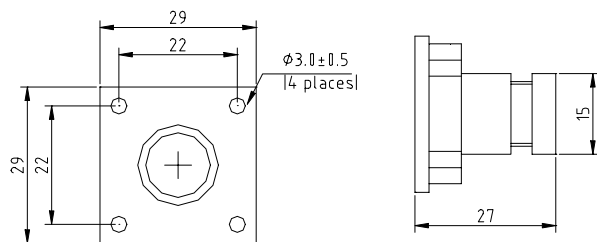
**Features:**

- Small size : 29 x 29 mm
- Full resolution: 365Kpixels
- Wide operation voltage (8 - 15V)
- Lens: f6.0mm F1.6
- Built in IR filter
- Low power consumption (<200mW)
- Direct connect to standard video monitor
- On-chip auto exposure control
- Gamma correction - 0.45/1.0
- Auto gain control - 18dB
- Automatic white balance
- Automatic black level calibration



**Application Example**

- Video conferencing
- Video Phone
- PC multimedia
- Security and Surveillance System
- Toys



**Specification**

	C3185A(PAL)	C3186A (NTSC)
Imager	CMOS imager sensor OV7910	
Scanning	2:1 Interlace	
Shutter	1/60 to 1/15,000 sec	
Video Output	Composite video (75Ω)	
Picture Element	628 x 582 pixel	510 x 492 pixel
Effective image area	5.78 x 4.19mm	4.69x 3.54mm
S/N Ratio	>48dB (AGC on )	
Fixed pattern noise	<0.03% Vp-p	
Dark Current	<0.2nA/cm <sup>2</sup>	
Dynamic range	>72dB	
Min Illumination	3 Lux at f1.2 (3000K)	
Operation Voltage	8 - 15 VDC	
Connectors	PWR, Video, GND	
Lens	f6.0mm F1.6, FOV 51° x 43°	

**Pin Description**

1. CVO Composite Video Output  
Direct connect to TV/Monitor
2. GND Common Ground for power and video
3. PWR Power Supply 8-15V DC

